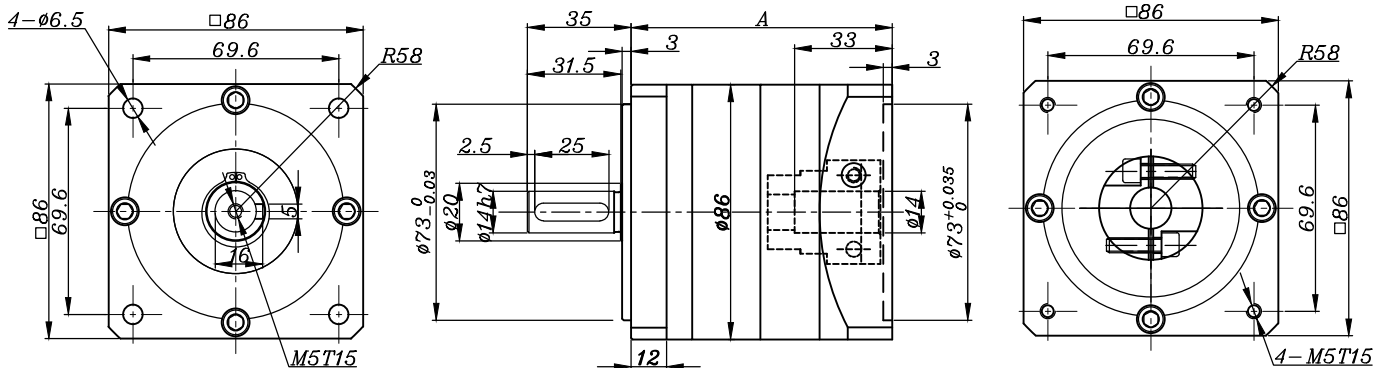
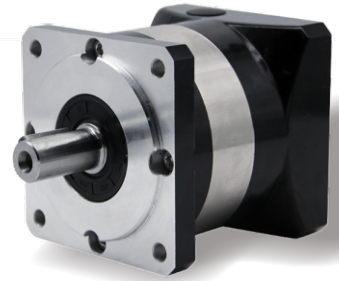


# DLF86 Series Planetary Gear Reducer

Standard Precision for Stepper Motors

## Mechanical Dimensions in mm



Note: Customizable to match with all motors.

## Specifications

Stage	1-Stage				2-Stage								3-Stage							
Length of A (mm)	89				112								135							
Reduction Ratio	4	5	7	10	16	20	25	28	35	40	50	70	64	80	100	125	140	175	200	
Rated Output Torque (N.m)	86	94.5	64	39.5	96	96	105	96	105	96	105	71.5	120	120	120	132	120	132	120	
Max. Output Torque (N.m)	172	189	128	79	192	192	210	192	210	192	210	143	240	240	240	264	240	264	240	
Fullload Efficiency (%)	96%				94%								90%							
Backlash	<10arcmin				<15arcmin								<25arcmin							
Weight (kg)	2				2.8								3.6							
Average Lifetime (H)	> 20000																			
Lubrication	Long-term Effective Grease																			
Rotation Direction	Input Output Same Direction																			
Working Temperature	-10 <sup>0</sup> ~+80 <sup>0</sup>																			
Installation	Any																			